



Taylor Today

NEWSLETTER

January - March 2025 Issue 184



WE ARE TAYLOR

Design, Engineer, Build, Service... It's What We Do!





CONTENTS

- 02 Taylor GTX-550H: Built for Strength, Precision, and Reliability
- 04 2024 Top Dealers
- 06 Dealer Spotlight on Taylor Northeast
- 08 Team Member News, Retirements, and Anniversaries
- 10 Taylor Sudden Service News
- 12 Taylor Sudden Service First Quarter Training Classes
- 13 Taylor Defense Products News
- 14 Taylor Power Systems News
- 16 Taylor Construction Equipment
- 18 Terberg Taylor Americas News
- 20 Taylor International News
- 22 Taylor International's Dealer Spotlight on DEFIBA
- 24 CVS Ferrari News
- 26 CVS Ferrari Dealer Spotlight on Green Port Equipment
- 28 Taylor's Tool & Supply News

TAYLOR GTX 550H



Taylor GTX-550H: Built for Strength, Precision, and Reliability

The Taylor GTX-550H is engineered for heavy lifting, boasting an impressive capacity of 55,116 pounds. It is equipped with a Cummins B6.7 Tier 4 Final diesel engine, which delivers up to 225 horsepower. The vehicle features a ZF 3-speed powershift transmission and a Kessler D91 wet disc brake axle, ensuring smooth and powerful performance.

The climate-controlled cab includes a 7-inch touchscreen, enhancing operator comfort, while the advanced hydraulic system promotes fuel efficiency.

To learn more about the GTX-550H, visit www.taylorforklifts.com.

5S: Lean Thinking & Methods

Making the Taylor Group of Companies the Benchmark for 5S

The entire Taylor team is fully engaged with the 5S strategy and is committed to continuous improvement! While it can be challenging to maintain momentum—especially when there always seems to be more work to do—everyone is making significant progress. Over the past two quarters, we have discussed the concept of 5S and focused on the first S, “Sort.” This quarter, we will shift our attention to the second S, “Set in Order.” Transitioning from Sort to Set in Order is a natural next step, as it builds on the foundation we have already established. This phase is all about organizing the remaining items to make them easier to access, use, and maintain, ultimately improving our overall efficiency.



WHAT IS SET IN ORDER?

Set in Order is the second step in the 5S methodology, focusing on organizing the items you have chosen to keep after the sorting process. The goal is to arrange these items in a way that enhances work efficiency and minimizes waste. Essentially, we aim to create a well-organized space where everything has a designated place and is easily accessible. The objective of this step is to ensure that any required item can be quickly and effortlessly located for work or production. All items should be stored for convenient access.

In an organized workspace, everything has its place, and everything is in its designated spot. Following the sort phase, where unnecessary items were eliminated, what remains are only the essential items for the tasks at hand. Each necessary item will be assigned a designated space marked by a shadow outline, a cut-out, or a taped-off area roughly the same size as the object being stored. Additionally, there will be a label next to each designated area indicating where the item belongs.

For example, frequently used tools can be placed at the top or in the most accessible locations, while less frequently used items can be stored deeper in the toolbox or in separate compartments. Labeling each storage space or tool can help ensure that everyone knows exactly where things go and that items are returned to their proper places after use. This is crucial for maintaining organization.

When the Set in Order step of the 5S methodology is executed effectively, it results in an organized workflow. This leads to reduced production time, as tasks transition smoothly into one another. Flow is the goal. This process creates a new sense of efficiency and ease, enabling work to be completed more effectively. It also reduces stress for workers, creates a safer workplace, and maximizes overall efficiency.

Now, let's get organized and stay on track to make the Taylor Group of Companies the benchmark for 5S!



A well-organized toolbox illustrates the concept of Set in Order. When tools are arranged logically and clearly labeled, it becomes much easier to find what you need when you need it.

2024 TOP DEALERS



Taylor Machine Works and Taylor Sudden Service would like to acknowledge the accomplishments of our Taylor dealers in 2024. Each year, Taylor Machine Works honors the dealer with the highest machine sales volume, while Taylor Sudden Service recognizes the dealer with the highest parts sales volume. Our network of Taylor dealers consists of companies dedicated to the Taylor brand, and we take great pride in these partnerships.





Top Dealers

- 1 Taylor Northeast
- 2 Hugg & Hall Equipment Co.
- 3 Cal-Lift, Inc.
- 4 Big Red Inc.
- 5 RION Equipment
- 6 Maritech Equipment
- 7 Welch Equipment Co.
- 8 Gallo Equipment Co.
- 9 Wolter Inc.
- 10 Cropac Equipment Co.



Top Dealers

- 1 Hugg & Hall Equipment Co
- 2 Taylor Northeast
- 3 Cal-Lift, Inc.
- 4 Gallo Equipment Co.
- 5 RION Equipment
- 6 Big Red Inc.
- 7 Washington Liftruck
- 8 Welch Equipment Co.
- 9 Cropac Equipment Co.
- 10 Maritech Equipment



DEALER SPOTLIGHT



About Taylor Northeast

Taylor Northeast was founded in 1989 in Morgantown, Pennsylvania, by George Koch and Pete Cicero to provide Taylor Machine Works lift trucks to the eastern half of the state. The company operates branches in Baltimore, Syracuse, New York, New Hampshire, and Pennsylvania's Lehigh Valley. In addition to these five locations, Taylor Northeast is a charter member of the H&K Equipment Group.

As a primary dealer for Taylor lift trucks and Terberg Taylor Americas terminal tractors in the Mid-Atlantic and Northeast regions, Taylor Northeast plays a vital role in the market. Ben Hecht, National Sales Manager at Terberg Taylor Americas, expressed, "We are grateful for their investments in equipment and parts inventory, but most importantly, for the time and energy they dedicate to the Taylor product line. The Northeast is a crucial part of the nation's transportation system, and we are excited about the opportunity to support Taylor Northeast's growth with Terberg Taylor America trucks. Taylor Northeast has the training, equipment, and readiness to meet customer needs and address market demands."



LEFT TO RIGHT: Kevin Koch, *President at H&K Equipment Group & Taylor Northeast*, and Matt Vargo, *Account Manager at Taylor Northeast*

Tradeshow & Events



APPALACHIAN LUMBERMEN'S CLUB MEETING

JANUARY 14, 2025

AAPA 2025 POWERS SUMMIT AND EXPO

JANUARY 20-22, 2025

PORT TECHNOLOGY SUMMIT NORTH AMERICA

FEBRUARY 4-6, 2025

MLMA 2025 ANNUAL MEETING

FEBRUARY 5, 2025

THE PRECAST SHOW 2025

FEBRUARY 5-7, 2025

TPM25

MARCH 2-5, 2025

2025 MLMA SPRING MEETING AND EXPO

MARCH 5-7, 2025

TMC25 TMC'S ANNUAL MEETING & TRANSPORTATION TECHNOLOGY EXHIBITION

MARCH 10-13, 2025

IHLA CONVENTION AND EXPOSITION

MARCH 17-19, 2025

AAPA 2025 LEGISLATIVE SUMMIT

MARCH 18-20, 2025

SWARS 2025 ANNUAL SPRING MEETING

MARCH 18-19, 2025

NAWE ON THE HILL

MARCH 24-26, 2025





TEAM MEMBER NEWS



Jakie Sullivan Celebrated 55 Years with The Taylor “Big Red” Team

In December 2024, Jakie Sullivan celebrated 55 years with Taylor, making him the longest-serving employee at The Taylor Group. He currently works as a Field Service Tech Level III at Sudden Service, Inc. Over his career, Jakie has taken on many roles, including Welder, Forklift Operator, Service Expeditor, Dispatch Expeditor, Parts Sales Representative, and Service Manager.

Robert Taylor, the President and COO of The Taylor Group, expressed his deep appreciation for Jakie’s unwavering dedication, stating, “I have had the privilege of working alongside Jakie Sullivan since my own career at Taylor began. He has consistently demonstrated a remarkable work ethic and an ability to tackle every challenge with both a positive attitude and a genuine smile. I thank him for his years of great service and dedication. ”

Davis Taylor, Director of Sudden Service, Inc., also highlighted Jakie’s immense contributions: “Mr. Jakie has been an part of Team Taylor for nearly twice as long as I have been alive! He handles every customer with “white glove” service. Although he is our most senior, we look at him as the grandfather of product support and customer service. I am proud to serve on the team with Mr. Jakie!”

Jakie’s remarkable journey with Taylor exemplifies not only his skill set but also the values of loyalty, excellence, and customer care that define The Taylor Group.

Allayna Lovorn Earnes SHRM-CP Certification

Allayna Lovorn, Human Resources Generalist at The Taylor Group, has recently earned her SHRM-CP (Society for Human Resource Management Certified Professional) certification. This certification assesses operational competency, including implementing policies, supporting daily HR activities, and serving as a point of contact for HR issues.

This significant milestone demonstrates Allayna’s dedication and commitment to her professional growth in Human Resources. The SHRM certification reflects her comprehensive understanding of HR principles, practices, and strategic thinking. Leigh Elighton, the Human Resources Manager at The Taylor Group, remarked, “Allayna’s achievement will undoubtedly benefit our team. We are incredibly proud of her accomplishment and look forward to her continued success.”





“EVERYTHING WE DO REVOLVES AROUND OUR PEOPLE AND THE JOBS THAT WE DO DAY IN AND DAY OUT!”

Robert Taylor

Employees Celebrating 35+ Years of Service

We are pleased to recognize and celebrate the exceptional dedication of our employees who have reached 35 or more years of service this quarter. Their unwavering commitment and hard work have significantly contributed to the Taylor team’s continued success. We extend our heartfelt gratitude for their outstanding service and ongoing excellence.

HUNTER HUDSON
36 YEARS OF SERVICE

HENRY MITCHELL
37 YEARS OF SERVICE

BEN WALKER
39 YEARS OF SERVICE

MICHAEL NORTON
36 YEARS OF SERVICE

DWIGHT HAYNES
37 YEARS OF SERVICE

KATHY COWARD
39 YEARS OF SERVICE

PAUL MCADORY
37 YEARS OF SERVICE

KELVIN TRIPLETT
38 YEARS OF SERVICE

LARY ADDKISON
46 YEARS OF SERVICE

DAVID LEWIS
37 YEARS OF SERVICE

EDDIE GOSS
38 YEARS OF SERVICE

MARK DRURY
41 YEARS OF SERVICE

MICHAEL TAYLOR
37 YEARS OF SERVICE

TERRELL HARRIS
38 YEARS OF SERVICE

LAURENCE HATHORN
41 YEARS OF SERVICE

KEVIN REEL
37 YEARS OF SERVICE

SCOTTY TANNER
38 YEARS OF SERVICE

RUFUS DOTSON
47 YEARS OF SERVICE

GROVER COLEMAN
37 YEARS OF SERVICE

ROBIN LIVINGSTON
39 YEARS OF SERVICE

LEX TAYLOR
47 YEARS OF SERVICE

Employees Retiring with 30+ Years of Service

We would like to express our heartfelt gratitude to the following individuals for their unwavering dedication and significant contributions to the Taylor team over the years. Their hard work and commitment have left a lasting impact on all of us. As they embark on this new chapter of their lives, we wish them all the best in their well-deserved retirement.

BOO REED
31 YEARS OF SERVICE WITH TAYLOR SUDDEN SERVICE

JACK SISSON
46 YEARS OF SERVICE WITH TAYLOR MACHINE WORKS

Taylor Sudden Service News



www.taylorsuddenservice.com



Taylor Sudden Service Managers Meeting

In March, Taylor Sudden Service hosted its annual managers meeting at Quail Ridge Lodge & Conference Center in Louisville, Mississippi. This gathering provided an invaluable opportunity for managers from all factory-direct locations to come together to network, share insights, and participate in targeted training sessions. The event featured various workshops focused on best practices, operational efficiency, and team leadership, fostering collaboration and enhancing the skills necessary for driving success across the organization. With an atmosphere of camaraderie and professional growth, attendees were able to forge stronger connections and exchange innovative ideas that would benefit both their teams and the company as a whole.

Factory Direct Locations



ALABAMA

1050 Powder Plant Road
Bessemer, AL 35022
(205) 428-7050

5640 Commerce Blvd, East
Mobile, AL 36619
(251) 666-2924

1121 John Overton Drive
Montgomery, AL 36110
(334) 279-6663

3612 Jack Kendall Way
Huntsville, AL 35806
(256) 384-3015

ARKANSAS

614 Highway 77 North
West Memphis, AR 72301
(870) 732-4900

FLORIDA

7711 West 22nd Avenue
Hialeah, FL 33016
(305) 599-2070

560 Cynthia Street
Jacksonville, FL 32254
(904) 801-1247

3459 Technology Drive, Suite 1
Nokomis, FL 34275
(239) 789-1864

3702 East 3rd Street
Panama City, FL 32401
(850) 807-0559

GEORGIA

65 Chamisa Road
Covington, GA 30016
(770) 483-0735

2279 Toledo Drive
Albany, GA 31705
(229) 800-8067

INDIANA

3754 North Raceway Road
Indianapolis, IN 46234
(317) 936-3805

KENTUCKY

312 Peterson Drive
Elizabethtown, KY 42701
(270) 257-4220

920 Wing Avenue, Suite B
Owensboro, KY 42303
(812) 250-5001

LOUISIANA

4904 Hazel Jones Road
Bossier City, LA 71111
(318) 742-4442

1912 W. Orice Roth Road
Gonzales, LA 70737
(225) 744-0030

MISSISSIPPI

3690 North Church Avenue
Louisville, MS 39339
(662) 773-3421

103 Industrial Park Road
Philadelphia, MS 39350
(601) 650-9600

1110 Wesson Tate Drive
New Albany, MS 38652
(662) 486-2750

461 Highway 49 South
Richland, MS 39218
(601) 922-4444

NORTH CAROLINA

4681 Marracco Drive
Hope Mills, NC 28348
(910) 425-3833

OHIO

2200 Hardy Parkway Street
Grove City, OH 43123
(513) 717-2985

OKLAHOMA

1315 South East 29th Street
Oklahoma City, OK 73129
(405) 548-1522

TENNESSEE

104 Brickmill Commercial Drive
Maryville, TN 37801
(865) 444-0883

1205 Bridgestone Parkway
La Vergne, TN 37086
(615) 392-4803

TEXAS

1930 West Cardinal Drive
Beaumont, TX 77705
(346) 226-0830

7325 IH-37 Access Road
Corpus Christi, Texas 78409
(361) 245-8710

2810 East I-20 Service Road
Odessa, TX 79764
(432) 231-0890

2415 Cold Springs Road
Fort Worth, TX 76119
(682) 204-0040

120 Hermann Sons Road East
Comfort, TX 78013
(830) 995-3465

4466 Genoa Red Bluff Road
Pasadena, TX 77059
(346) 226-0830

820 West Expressway 83
Donna, TX 78537
(956) 807-2347

VIRGINIA

165 Simmons Drive
Cloverdale, VA 24077
(540) 900-4628

8351 Brook Road
Richmond, VA 23227
(804) 266-6200

First Quarter Training Classes



ELME ATTACHMENTS TRAINING
FEBRUARY 3-6, 2025



ELME ATTACHMENTS TRAINING
FEBRUARY 3-6, 2025



ELME ATTACHMENTS TRAINING
FEBRUARY 3-6, 2025



CVS TRAINING
FEBRUARY 18-20, 2025



X180 - XH400L TRAINING
FEBRUARY 25-27, 2025



VOLVO ENGINE & VODIA DIAGNOSTICS TRAINING
MARCH 3-7, 2025



DTAC & VISION PLUS TRAINING
MARCH 18-19, 2025



Joe Cowart Appointed as Director of Operations for Taylor Defense Products

Phil Sprio, Director of Taylor Defense Products, recently announced the appointment of Joe Cowart as Director of Operations. "With the continued growth of Taylor Defense Products in the support of our armed forces, Cowart's role will be a vital asset in the success of these new endeavors," Sprio remarked.

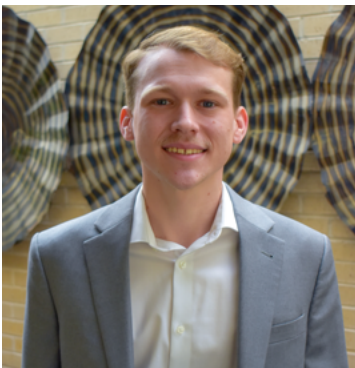
Joe Cowart, a 2000 graduate of Mississippi State University, began his career at Taylor Machine Works after college, where he worked until 2008. He returned to Taylor Machine Works as a Manufacturing Engineer Group Leader in 2015. Cowart was promoted to a senior management position in 2016 as the Director of Industrial Engineering and Quality.

Taylor Defense Products was launched by The Taylor Group of Companies in 2017. Its mission is to supply the United States military, its allies, and the United States government with highly durable, well-supported, and cost-effective material handling and logistics products. Since then, Taylor Defense Products has experienced significant growth.

Taylor Power Systems News



www.taylorpower.com



TEAM MEMBER NEWS: Karson Wardell Appointed Engineering Manager

Karson Wardell has been appointed as Engineering Manager at Taylor Power Systems, where he will oversee engineering and quality control. He holds a degree in Mechanical Engineering from the University of Mississippi and is currently pursuing his Professional Engineer (PE) certification. Karson brings six years of military experience as an Aerospace Propulsion Mechanic, along with two years of healthcare research focused on micro-needle arrays. His diverse background equips him to tackle complex challenges across various fields.

Taylor Power Employees Complete CAVS Extension Lean Manufacturing Certificate Training Program at Mississippi State University

Congratulations to Taylor Power Systems employees Richard Welch and Jonathan Smith for successfully completing the Lean Manufacturing Certificate Training Program through the CAVS Extension at Mississippi State University. This program equips manufacturing managers, engineers, and executives with the skills needed to identify and eliminate waste in the workplace, ultimately improving the workflow of manufacturing operations. We appreciate Richard and Jonathan's dedication and hard work in enhancing our manufacturing facility.





Haley Barbour Center for Manufacturing Excellence Program

In January, Taylor Power Systems hosted students and faculty from the Haley Barbour Center for Manufacturing Excellence program at the University of Mississippi. At the start of the week, the students were divided into teams and assigned to specific manufacturing lines. Throughout the week, each team identified issues and obstacles in the manufacturing process and proposed solutions for each production line. The students then presented their recommendations to the Taylor Power management team.

The students performed exceptionally well, demonstrating ways to increase efficiency, reduce production times, and implement lean manufacturing principles to enhance processes at Taylor Power.

Hinds Community College's Diesel Technology Program Receives Comprehensive Hands-On Training from Taylor Power

Recently, students from the Diesel Technology Program at Hinds Community College had the opportunity to enhance their learning through a hands-on training session hosted by Taylor Power. Gordon Musgrove, who oversees Technical Training and Development at Taylor Power Systems, provided an engaging lecture focused on the fundamentals of electricity and essential circuit diagnostics, highlighting the real-world applications of these concepts in the industry.

After the informative lecture, the students participated in an interactive lab session where they applied their theoretical knowledge in practical scenarios. This hands-on training allowed them to troubleshoot and repair equipment using industry-standard tools and techniques. To further enrich their experience, the students toured Taylor Power's state-of-the-art manufacturing facility, where they observed the production processes and the technology involved in creating power systems.

During the visit, the students also engaged in meaningful discussions with Kelly Johnson, the R&D/Technical Support Manager at Taylor Power. As a alumnus of Hinds Community College's Diesel Technology Program, Kelly shared valuable insights about his career journey and provided advice on navigating potential job pathways within the diesel and power generation industries. This experience offered the students a clearer understanding of career opportunities and the skills necessary for success in their future endeavors.



Taylor Construction Equip. News



HD HYUNDAI

Taylor Construction Equipment Expands Hyundai Construction Equipment Territory in Alabama

Taylor Construction Equipment is thrilled to announce the expansion of its Hyundai Construction Equipment territory to encompass the state of Alabama. This exciting development allows us to provide local customers with a diverse array of top-quality machinery, including compact excavators, crawler excavators, wheel loaders, dump trucks, dozers, and compact loaders.

Keep an eye out for our upcoming locations in Alabama. We are eager to serve your construction equipment needs there!

BESSEMER, ALABAMA
(205) 445-9995



BOBBY CYRUS

PROMOTED TO GENERAL MANAGER

Bobby Cyrus has been promoted to General Manager at Taylor Construction Equipment. He has been a vital part of our team, demonstrating leadership and expertise in the construction equipment industry. In his new role, Bobby will oversee operations and strengthen customer relationships, ensuring the continued growth and success of the company.



ZOE MCCOOL

PROMOTED TO REGIONAL SALES MANAGER

Zoe McCool, our former Parts and Service Sales Representative, has taken on the role of South Mississippi Regional Sales Manager. With her dedication to customer service, Zoe is prepared to help customers find the ideal equipment solutions.

(601) 504-8680 | zmccool@taylorbigred.com



ED TABOR

REGIONAL SALES MANAGER

We are pleased to welcome Ed Tabor as our new salesman for Alabama! He is committed to assisting you in finding the right equipment for your needs and ensuring an exceptional customer experience.

(205) 792-9976 | etabor@taylorbigred.com



HALLIE NOWELL

PARTS & SERVICE SALES REPRESENTATIVE

We are pleased to welcome Hallie Nowell as our Parts and Service Sales Representative. She is dedicated to providing excellent customer support and ensuring your equipment performs optimally.

(662) 803-9585 | htnowell@taylorbigred.com



Jason Reel Appointed Operations Manager at Terberg Taylor Americas' Manufacturing Facility in Columbus, Mississippi

The Terberg Taylor Americas' manufacturing facility, located in Columbus, Mississippi, is making significant advancements in both its workforce and product offerings. Jason Reel has been appointed as the Operations Manager, bringing valuable experience to oversee production and ensure quality standards during the Pre-Delivery Inspection (PDI). He will manage team leads to maintain efficient production flow and oversee warehouse and logistics operations to improve supply chain efficiency. Ben Hecht, National Sales Manager at Terberg Taylor Americas, expressed enthusiasm for Jason's leadership, noting, "We are very excited about Jason's new role, as his expertise will be crucial in driving our operational success and meeting customer needs."

Jacob Sipple Strategic Account Manager at Terberg Taylor Americas

Jacob Sipple is a member of the Terberg Taylor Americas sales team. He brings substantial experience in the terminal tractor industry from a manufacturing perspective and is well-respected throughout the field. His technical knowledge and sales skills are valuable assets to the team.

Jacob's role focuses specifically on a select group of "Strategic Accounts." These accounts comprise major national-level fleets that utilize centralized procurement and have historically purchased terminal tractors directly from manufacturers. Although the number of these accounts is limited, we anticipate that successfully engaging with them will have a significant positive impact on our business in the long run.





Producing First Commercial Drive by Wire Vehicles

The Terberg Taylor Americas' manufacturing facility in Columbus, Mississippi, has recently completed its first large batch of commercial Drive-by-Wire vehicles—the first of their kind produced in the United States. These vehicles respond to market demand and provide a platform for integrating autonomous systems. As a technology leader in terminal tractors, Terberg Taylor Americas is currently manufacturing a tractor equipped with technology that can accept and execute software operational commands.

DOT-spec YT Terminal Tractor

The manufacturing facility in Columbus, Mississippi, is now producing YT193-DOT Terminal Tractors. These DOT-certified terminal tractors are crucial for the domestic market, as many of our customers require vehicles that comply with Department of Transportation (DOT) regulations. This new version includes slight modifications from our off-road models, such as specific engine configurations and emissions systems.

Until now, we have been serving our customers with DOT-compliant vehicles imported from Benschop, Netherlands. We appreciate the support from our factory in the Netherlands in meeting our interim market demands, and we are excited to include the YT193-DOT in our lineup of vehicles manufactured in Mississippi. This DOT-spec model showcases Terberg's commitment to providing customers with products tailored to their needs, along with local production and support.



Delivering the First Electric Vehicles to the Market

Introducing a proven, ready-to-use chassis paired with an electric vehicle (EV) powertrain has generated significant interest in the market. While some competitors are still in pilot phases, Terberg Taylor Americas has a fully commercialized tractor available. We have completed over 20 EV demonstrations in partnership with our dealer network. With our "Built to Last – Charged to Perform" platform, we offer a truck that meets market demands. This vehicle provides the same value proposition as its diesel equivalent while integrating advanced EV technology in its powertrain.

Terberg Taylor Americas Exhibits at 2025 Annual Meeting & Transportation Technology Exhibition

Terberg Taylor Americas representatives exhibited at the TMC 2025 Annual Meeting and Transportation Technology Exhibition, a key industry event that features educational sessions, networking opportunities, and the latest technology advancements. The event drew over 5,000 leaders from the commercial vehicle transportation sector.

LEFT TO RIGHT: Eric Tacker, Hal Nowell, Ben Hecht, Jacob Sipple, Ferdinand Terberg, and Davis Taylor





Taylor International At Work Around the Globe

The Taylor International team is diligently working to strengthen commercial ties and enhance the global presence of the Taylor brand. Recently, team members have traveled to several key markets, including Peru, Ecuador, Panama, Guatemala, the Cayman Islands, and Fiji. In these diverse locations, they have engaged with local partners, explored new business opportunities, and participated in industry events to promote the Taylor brand effectively. These efforts have significantly raised brand awareness and established a robust international network.

LEFT PICTURE: New Taylor XC300M arrives in Peru

MIDDLE PICTURE: Technical training in Peru

RIGHT PICTURE: Technical visit in Grand Cayman





A New Frontier for Taylor International in Fiji

In February, the international team visited their first customer in Fiji for a technical visit. Suva, the capital of Fiji, hosts the largest and busiest international passenger, container, and general cargo port. Officially, the Republic of Fiji comprises more than 300 islands located in the South Pacific Ocean, approximately 1,300 miles northeast of New Zealand. Fiji is one of the most developed economies in the Pacific Islands, with key natural resources, including timber, fish, gold, copper, and offshore oil. The island nation has a thriving tourism sector, primarily attracting visitors from Australia, New Zealand, and the United States.

Taylor International Hosts Visitors

In February, Taylor International hosted a long-time customer from the Caribbean, St. Maarten Shipping & Stevedoring (SSS) and future dealer, Rimac.

“These international visits by customers and especially new dealers are extremely important to further solidify and establish new business endeavors and relationships with Taylor International, in addition to showing commitment with their efforts to travel from far away places to our factory,” commented Rose Boxx, International Operations and Business Development Manager at Taylor International.

ST. MAARTEN SHIPPING & STEVEDORING

Founded by George Pelgrim in 1985, SSS provides port terminal services, stevedoring, trucking, and various related cargo and maritime services to all cargo lines operating at the Port of Philipsburg in St. Maarten. SSS is not only the largest inland container haulage transport company on the island, but it is also a strong supporter of the local community, participating in initiatives such as food bank collections and donations to schools and shelters, among other activities.

RIMAC

Rimac, headquartered in São Paulo, Brazil, specializes in areas such as ports, steel, naval activities, mining, transportation, and the handling of special cargo. The company represents several large foreign manufacturers. Founded in 1995, shortly after the implementation of Brazil’s Port Modernization Law— which led to the privatization of the sector—Rimac emerged to meet the growing need for new infrastructure investments.



ST. MAARTEN SHIPPING & STEVEDORING TEAM



RIMAC TEAM



DONI CHACON

Team Member News

We are pleased to welcome Doni Chacon and Rodolfo Robinson to the Taylor International team. Both will be joining us as Regional Technicians.

Doni, who is based in Guatemala, previously worked as a mechanical technician at APM Terminals at the Port of Quetzal in Guatemala. Similarly, Rodolfo also worked as a mechanical technician at Hutchison Ports in Panama.



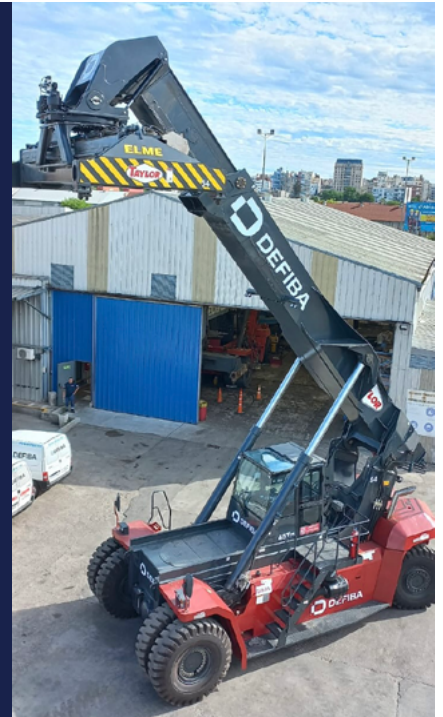
RODOLFO ROBINSON

DEALER SPOTLIGHT ON



Taylor International wants to recognize one of its dealers, DEFIBA, this quarter. “DEFIBA’s dedication to customer service and deep understanding of the industry set them apart. We are confident that DEFIBA will continue to uphold the values and reliability that define the Taylor brand, ensuring customers in the region receive unparalleled support and quality equipment,” stated Rose Boxx, International Operations and Business Development Manager at Taylor. In 2024, DEFIBA became an Authorized Taylor Dealer in Argentina and Uruguay. Hal Nowell, the Director of Sales at Taylor, stated, “DEFIBA’s business capabilities, high standards, and exceptional reputation in the industrial equipment sector were key reasons we chose them to represent Taylor in South America. We share a vision where customers trust us to provide excellent equipment and maintain it through quality service and parts. This dealer partnership between DEFIBA and Taylor promises to deliver the best, most dependable, longest-lasting, and most effective machines and services for that market.”

Founded in the early 1990s, DEFIBA is a family business that specializes in modern cargo services tailored to the specific needs of the South American market. With over 30 years of experience in supply chain management, goods movement, storage, and robust equipment rental services, DEFIBA is well-equipped to expand the Taylor brand in the region. The company aims to cultivate relationships based on mutual understanding and respect, adding value to various supply chains and addressing the unique needs of each service in order to support clients in achieving their objectives.



**TAYLOR INTERNATIONAL CONGRATULATES
ALL LIFT FORKLIFTS & ACCESS EQUIPMENT
FOR 25 SUCCESSFUL YEARS, AND WE LOOK FORWARD
TO WORKING TOGETHER IN THE AUSTRALIAN MARKET!**

Taylor International's Australian Dealer Celebrates 25th Anniversary

In March, All Lift Forklifts & Access Equipment celebrated a huge milestone: 25 years of business! Bruce Kretchmer, All Lift's founder, started in a small industrial warehouse in Northwest Sydney and has grown into a national company with six branches, nearly 200 team members, and an incredible network of sub-dealers, customers, partners, and friends.

"This celebration event was not just about looking back on how far we have come—it was about celebrating the people who got us here. Our journey has been built on hard work, strong relationships, and a passion for delivering the best in lifting solutions for our clients," commented Dean Kretchmer, Bruce's son and Managing Director at All Lift. "A massive thank you to our people and those who have supported us over the years; the next 25 years look even bigger; we are just getting started," added Dean.

ABOUT ALL LIFT FORKLIFTS & ACCESS EQUIPMENT

All Lift Forklifts & Access Equipment is a proud, independently-owned Australian company specializing in forklift rental and sales nationwide, supplying the hire and sale of dependable forklifts, telehandlers, container handlers, parts, and accessories.





TEAM MEMBER NEWS: Marco Monti Retires After 40 Years of Service

As 2024 came to a close, CVS Ferrari celebrated the retirement of one of its most iconic employees, Marco Monti. A native of Roveleto di Cadeo, Marco dedicated his entire career to the assembly plant of CVS Ferrari, where he worked for forty years. During his time there, he climbed the ranks to become the senior product prototyper and assembly operations instructor. Known for his extensive knowledge of the craft, Marco significantly contributed to product improvement and helped establish the company's reputation for quality and reliability.

The entire CVS management team and his colleagues extend their best wishes to Marco for his well-deserved retirement. Given his passion for sports and his active engagement in the local community, they are confident he will stay busy in his new chapter.



CVS Ferrari Electrified ECH Disembark at Port of Rotterdam

Two unique CVS Ferrari Electrified Empty Container Handlers have arrived at the Port of Rotterdam, Europe's busiest container port. One customer has taken delivery of a CVS Ferrari Hy-Lift model HY11.7DS, which is capable of stacking two containers over six ISO containers with a capacity of 11 tons using a double-handling telescopic spreader.

Meanwhile, CVS Ferrari has also delivered the full electric counterpart to the Hy-Lift model, the CVS Ferrari Ze-Lift model ZE11.7DS. This model is powered by a lithium-ion battery instead of a generator set and is supported by a supercapacitor bank.

Both trucks have demonstrated impressive energy efficiency, thanks to their unique and patented full electric winch and cable lifting technology. This technology regenerates and recycles significant amounts of cost-free and completely clean renewable electric energy. Thanks to CVS Ferrari, the Port of Rotterdam is now a cleaner and more efficient harbor.

CVS Ferrari Introduces New Variant of Reach Stacker Model

CVS Ferrari has launched a new variant of its "V" Reach Stacker range, recently delivering this model to three Italian freight forwarders. Designated as F500.RS5-V PB, this machine features an intermodal spreader with block stow piggyback legs and 18.00x33 tires. It is designed for companies operating in small intermodal yards that do not require high or second-row stacking capabilities. This variant provides the right set of features along with simple and cost-effective maintenance.

Pictured here is the unit delivered to Alberti & Santi, a well-known logistics operator based just five miles from the CVS Ferrari plant in Roveleto di Cadeo, Italy, serving customers across Europe.





DEALER SPOTLIGHT ON

GREEN
PORT EQUIPMENT



A Future-Focused Approach with CVS Ferrari by Green Port Equipment

Kristof Dockx is a seasoned industry leader with more than 25 years of experience in heavy equipment solutions. He founded both Dockx Handling Equipment and Green Port Equipment, where he plays a crucial role in shaping their strategies and fostering partnerships in port handling technology. By offering both equipment sales and rental services, Dockx Handling Equipment provides a comprehensive solution for port operations, solidifying its position as a key player in the industry.



About Green Port Equipment

In 2023, CVS Ferrari began its exclusive representation in the Benelux region—Belgium, the Netherlands, and Luxembourg—through Green Port Equipment. This company is a sister organization of Dockx Handling Equipment, one of the largest providers of container handling trucks and port applications in Europe. Founded in 2009, just 15 years ago, Dockx Handling Equipment has rapidly established itself as a major player in long-term rentals, offering full service for reach stackers and empty container handlers in one of the busiest container traffic regions in Europe.

Kristof Dockx, the founder and current leader of Dockx Handling Equipment, has developed expertise in the preventive and corrective maintenance of equipment, as well as in managing the human resources needed for this demanding field. At the time of writing, Dockx Handling Equipment boasts a rental fleet of over 200 heavy machines, primarily operating in the ports of Antwerp and Rotterdam.

As customer priorities increasingly shifted towards environmental sustainability while maintaining economic viability, Kristof sought alternatives to the equipment brand he had relied on for over a decade. This search led him to CVS Ferrari. The prospect of partnering with a highly efficient service organization known for its reliability and modern product range excited both CVS Ferrari and Dockx Handling Equipment. Consequently, the owners of Dockx established Green Port Equipment, a dedicated company that sells CVS lift trucks and reach stackers in the region.

Green Port Equipment shares extensive resources with Dockx Handling Equipment. The company has already integrated several CVS Ferrari machines into its operational fleet, including hybrid and fully electric empty container handlers and energy-saving reach stackers. “The reliability and fuel efficiency of the CVS Ferrari machines have been nothing short of amazing,” Kristof states. “The local market now recognizes CVS Ferrari as the premium brand for quality and technological innovation.”

Green Port Equipment and Dockx Handling Equipment operate from their headquarters and main workshop located in the heart of the Port of Antwerp on the left bank of the Schelde River. They also have workshops located within the same port and in the expansive Rotterdam Port, which is the largest in Europe.



Taylor's Tool & Supply News



(662) 773-5021 | 55 NORTH COLUMBUS AVENUE, LOUISVILLE, MS 39339



(662) 546-5980 | 118 MS HWY 12 W STE 10, STARKVILLE, MS 39759



Cars and Coffee Event Hosted by Taylor's Tool & Supply in Louisville, Mississippi

On March 8th, Taylor's Tool & Supply proudly hosted a Cars and Coffee event, which was free and open to the public. This gathering allowed car enthusiasts and families to mingle in a lively atmosphere. Attendees not only showcased a stunning array of vehicles, but they also enjoyed the delightful offerings of fresh coffee from local favorite Ming Muggin and delicious donuts from Louisville Donuts.

A highlight of the event was the unveiling of the new wrap on Chase Dewberry's racecar. Taylor's Tool & Supply is honored to sponsor Chase for the 2025 season!



TEAM MEMBER NEWS: BJ Glover Announced as Assistant Manager of Taylor's Tool & Supply ACE Hardware

Taylor's Tool & Supply recently announced the appointment of BJ Glover as the Assistant Manager for its Ace Hardware stores located in Louisville and Starkville. In this role, Glover will oversee daily operations, manage staff, and ensure top-notch customer service in both locations.

The



of Companies



www.taylorbigred.com